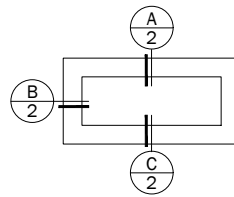
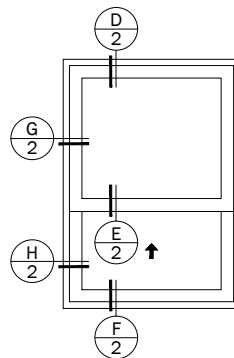


Reverse Cottage Single-Hung Windows With Flange



Single Transom



Reverse Cottage
Single-Hung

Notes:

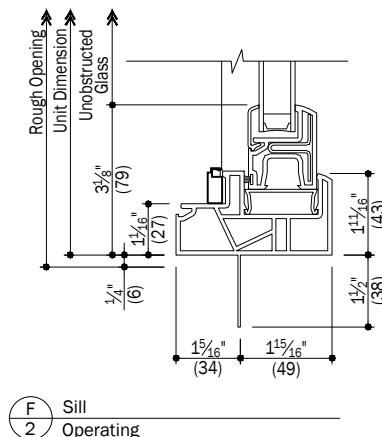
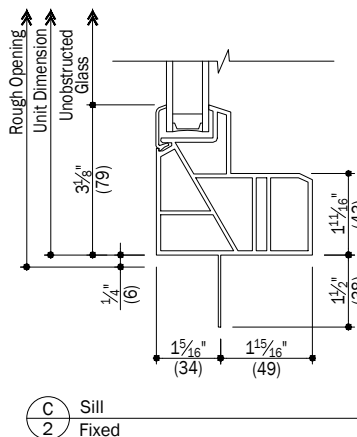
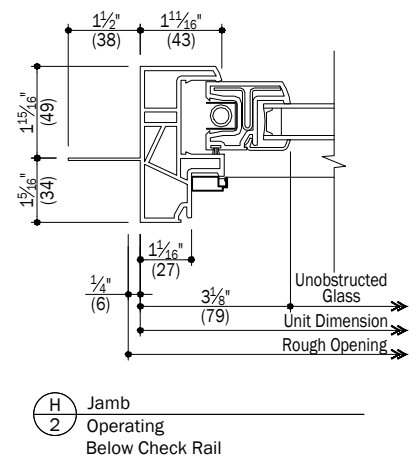
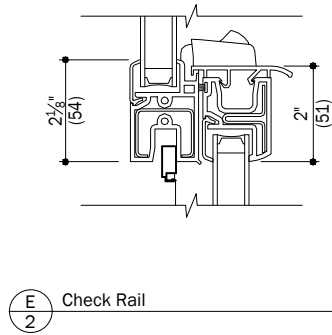
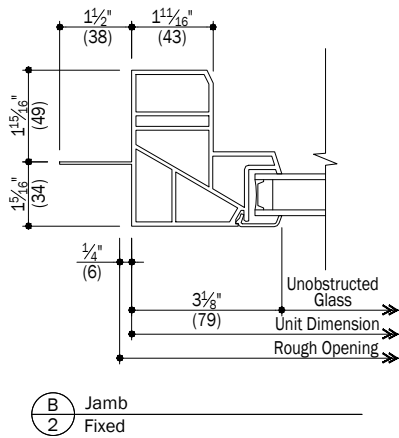
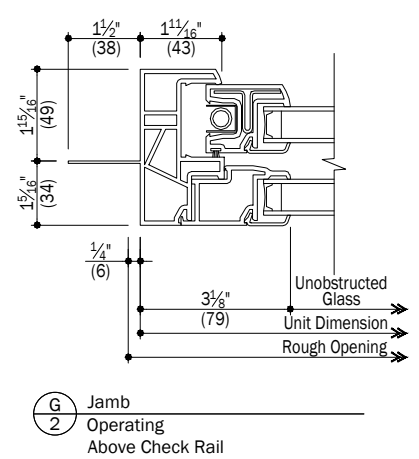
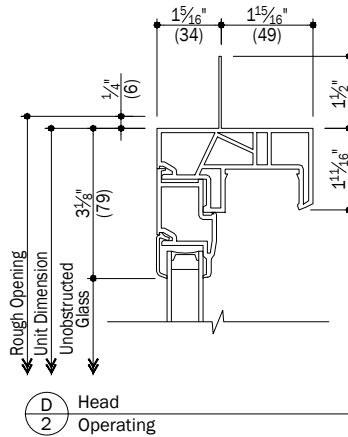
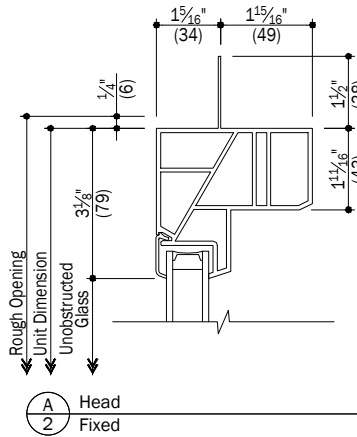
Details have been optimized for use in architectural software and do not match manufacturing specifications.
Dimensions in parentheses are in millimeters.

See Page 3 for Accessories

Date: 11/15/16
Scale: None

100 Series

Reverse Cottage Single-Hung Windows With Flange



Notes:

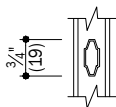
Details have been optimized for use in architectural software and do not match manufacturing specifications.
Dimensions in parentheses are in millimeters.

See Page 3 for Accessories

Date: 11/15/16
Scale: 3" (76) = 1' (305)

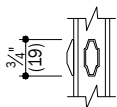
100 Series

Reverse Cottage Single-Hung Windows With Flange Accessories



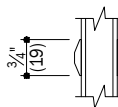
A
3

3/4" Finelight Grille



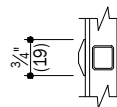
B
3

3/4" Finelight w/ Exterior Grilles



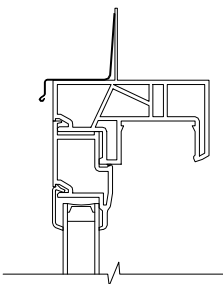
C
3

3/4" Simulated Divided Light Grille



D
3

3/4" Full Divided Light Grille



E
3

Drip Cap

1 3/8" Flange Setback
Field Applied Only

Notes:

Details have been optimized for use in architectural software and do not match manufacturing specifications.
Dimensions in parentheses are in millimeters.