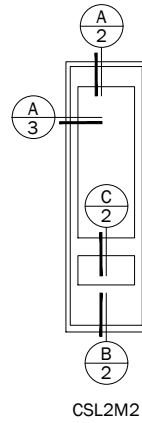
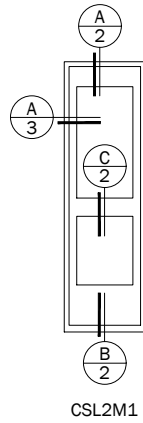
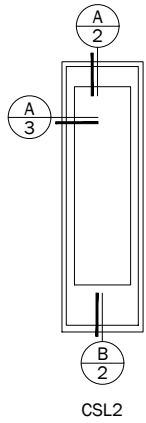
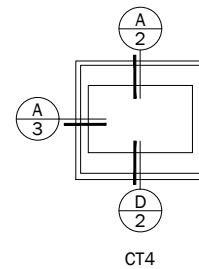
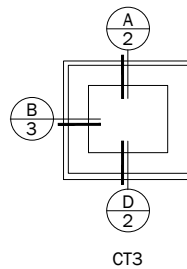
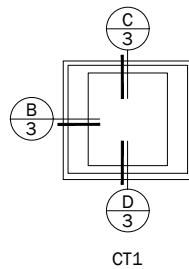
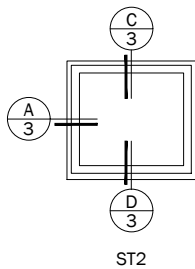


Sidelights



Transoms



Notes:

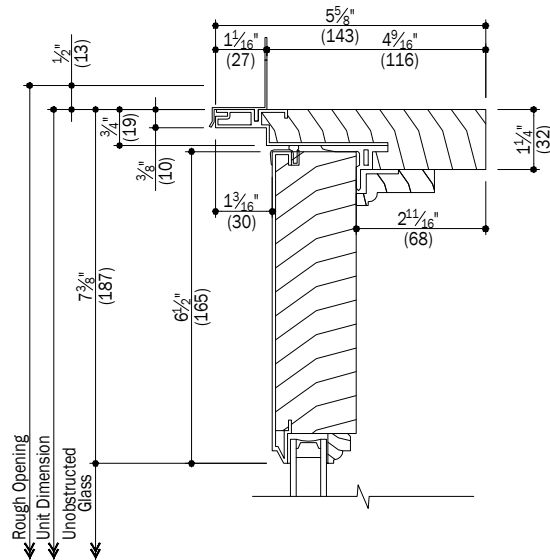
Details have been optimized for use in architectural software and do not match manufacturing specifications.
Dimensions in parentheses are in millimeters.

See Pages 4 Thru 11 for Options and Accessories

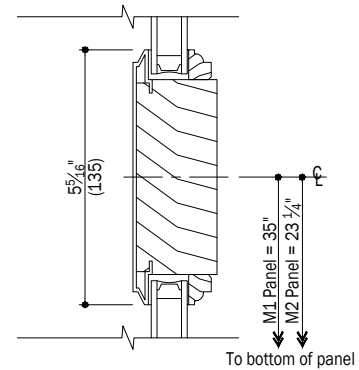
Date: 02/06/18
Scale: None

E-Series

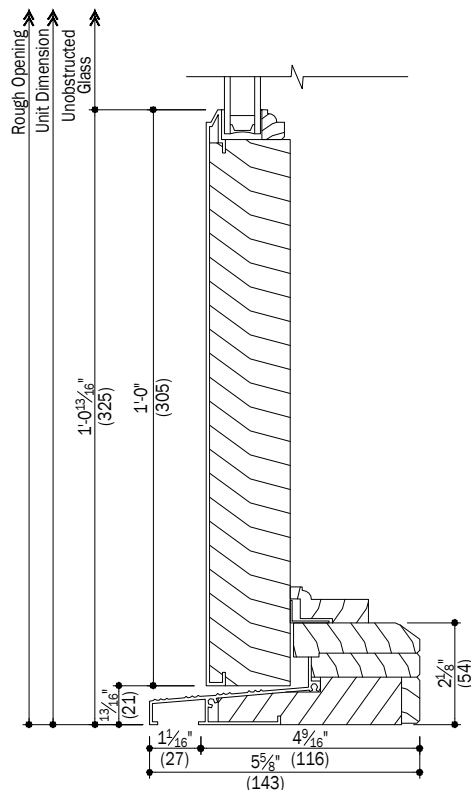
Commercial Door Sidelights & Transoms



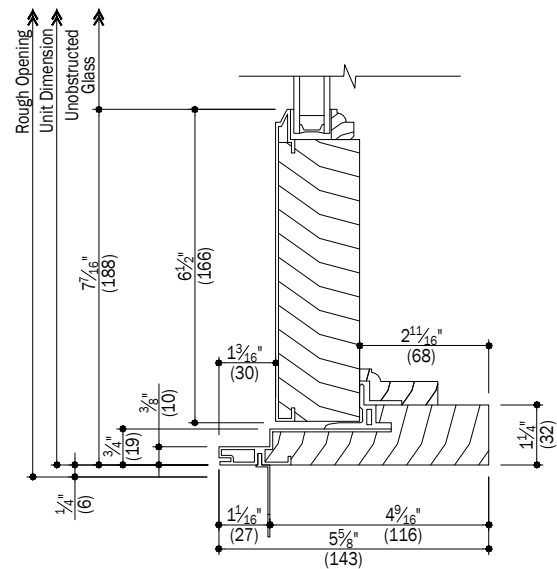
A Head
2 Sidelight



C Mid-Rail
2



B Low Threshold Sill Alignment
2 Sidelight



D Sill
2 Transom

Notes:

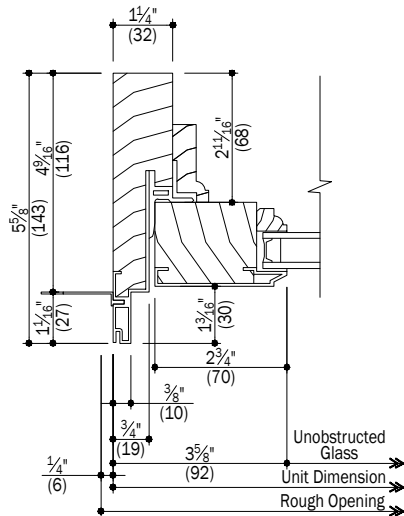
Details have been optimized for use in architectural software and do not match manufacturing specifications. Dimensions in parentheses are in millimeters.

See Pages 4 Thru 11 for Options and Accessories

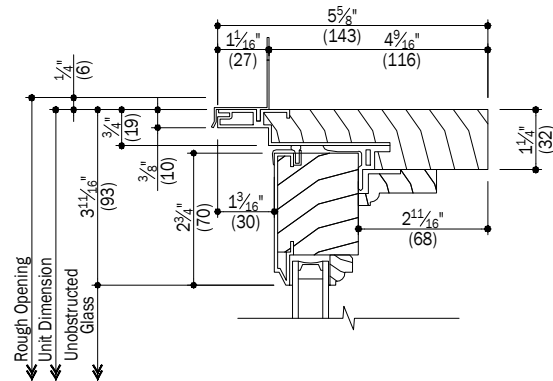
Date: 02/06/18
Scale: 3" (76) = 1' (305)

E-Series

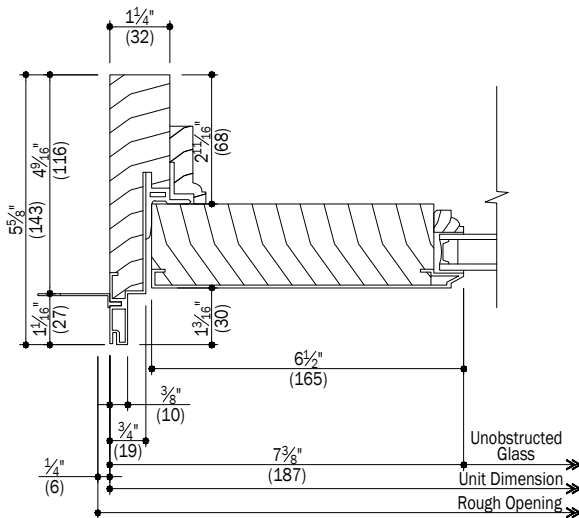
Commercial Door Sidelights & Transoms



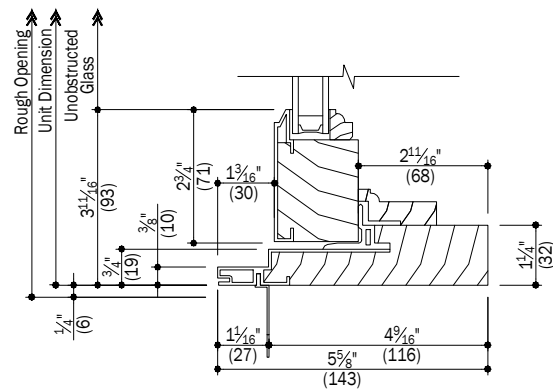
A Jamb
3 Sidelight



C Head
3 Transom



B Jamb
3 Transom

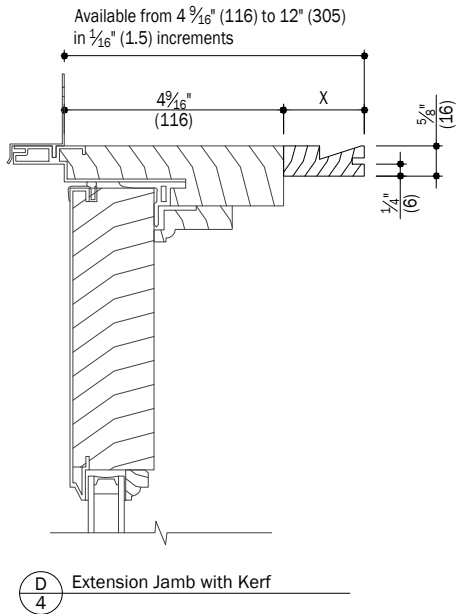
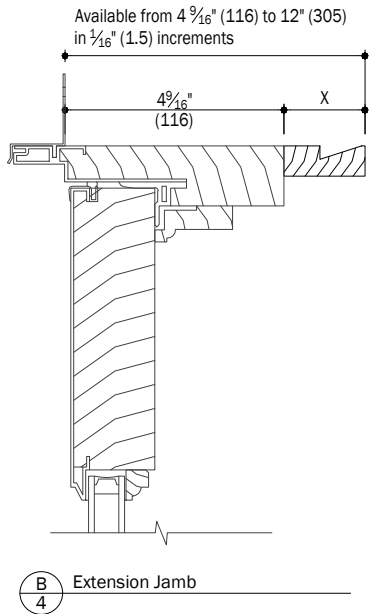
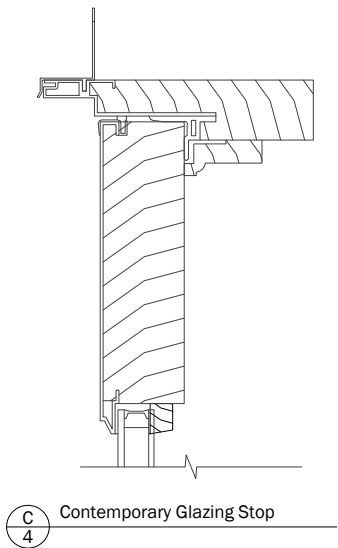
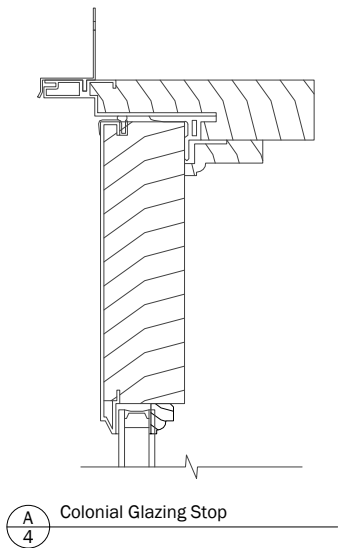


D Sill
3 Transom

Notes:

Details have been optimized for use in architectural software and do not match manufacturing specifications. Dimensions in parentheses are in millimeters.

See Pages 4 Thru 11 for Options and Accessories

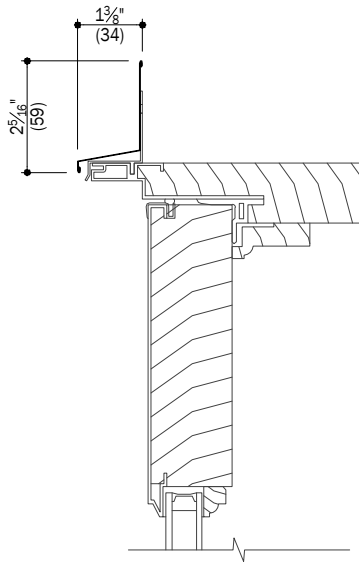


Notes:

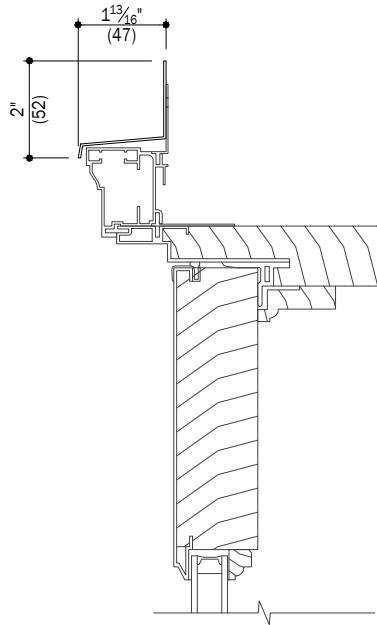
Details have been optimized for use in architectural software and do not match manufacturing specifications.
Dimensions in parentheses are in millimeters.

E-Series

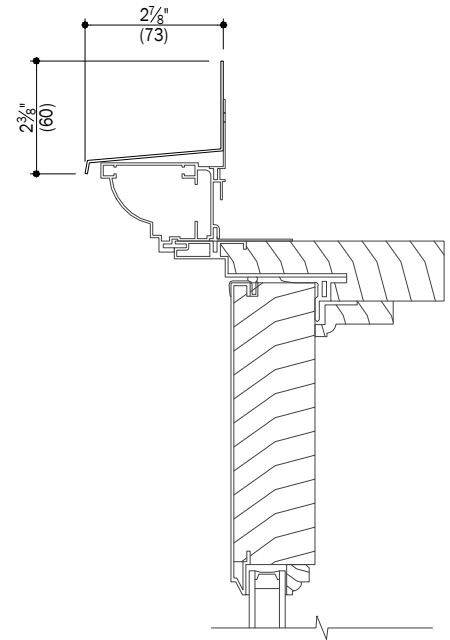
Commercial Door Sidelights & Transoms



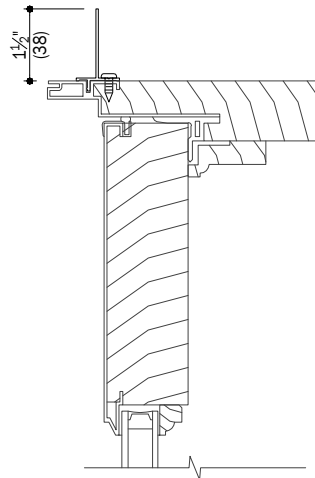
A
5 Roll Form Drip Cap



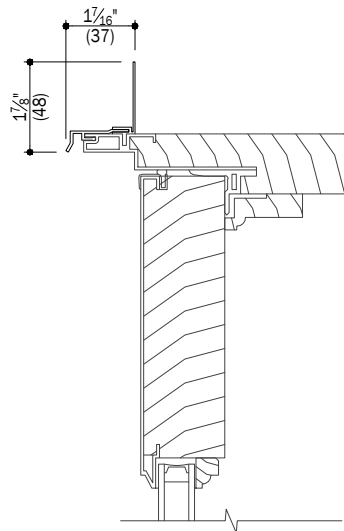
C
5 Brick Mould Drip Cap



E
5 Casing Drip Cap



B
5 Aluminum Installation Flange



D
5 Extended Drip Cap

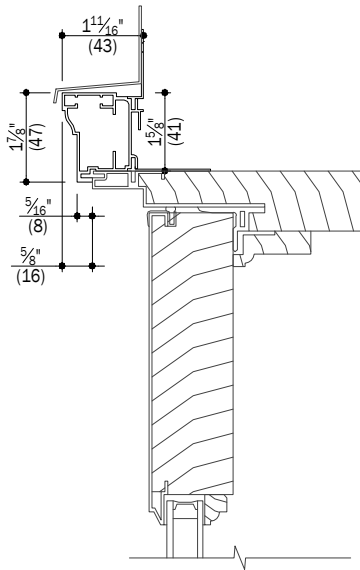
Notes:

Details have been optimized for use in architectural software and do not match manufacturing specifications.
Dimensions in parentheses are in millimeters.

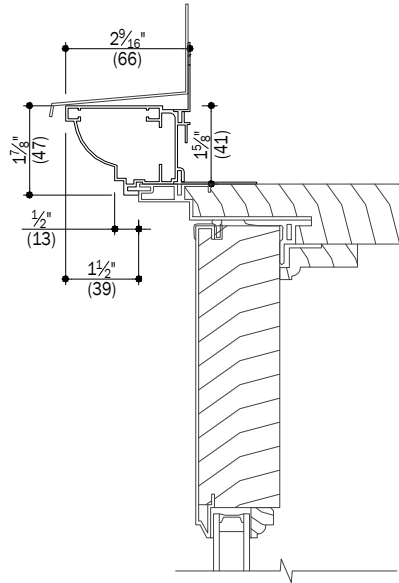
Date: 02/06/18
Scale: 3" (76) = 1' (305)

E-Series

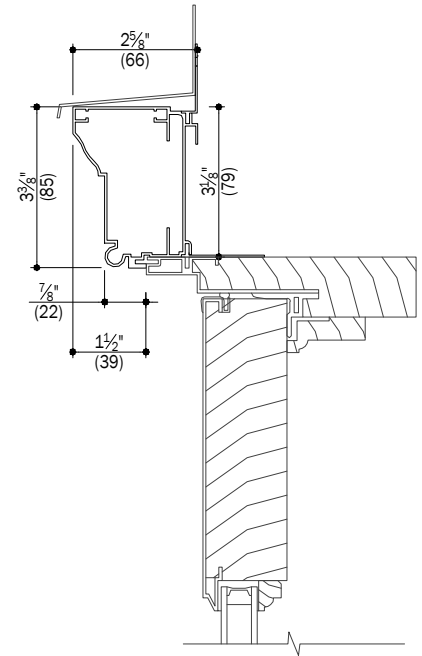
Commercial Door Sidelights & Transoms



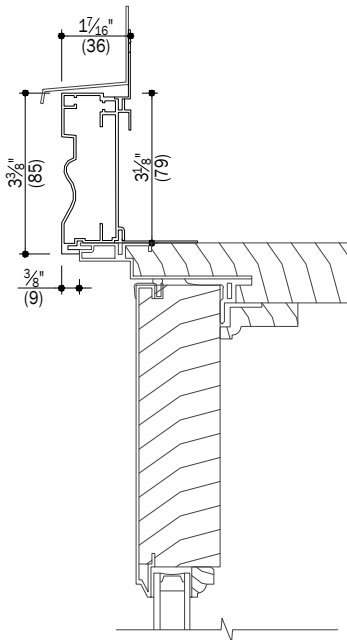
A
6 2" Brick Mould (A753)



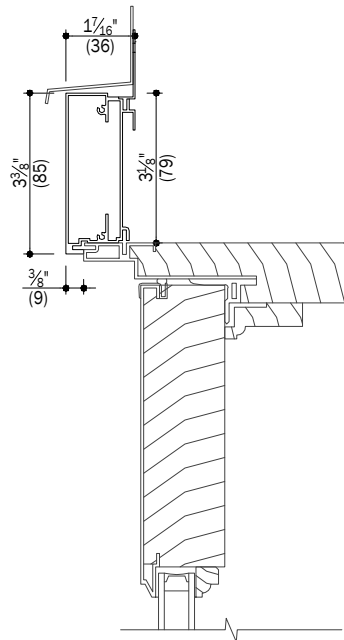
C
6 2" Ovolo Brick Mould (A754)



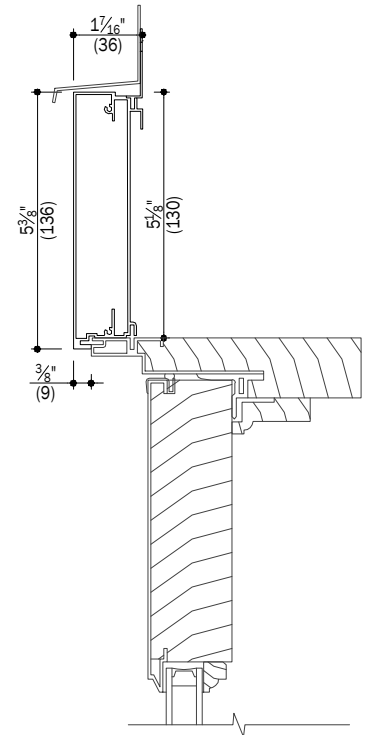
E
6 3 1/2" Brick Mould (A755)



B
6 3 1/2" Backband & Bead Casing (A756)



D
6 3 1/2" Flat Casing (A75B)



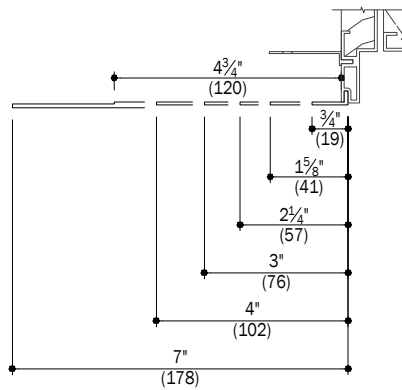
F
6 5 1/2" Flat Casing (A758)

Notes:

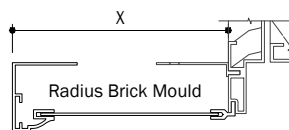
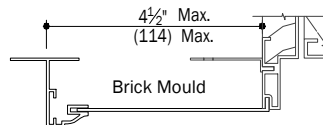
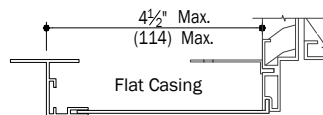
Details have been optimized for use in architectural software and do not match manufacturing specifications.
Dimensions in parentheses are in millimeters.

E-Series

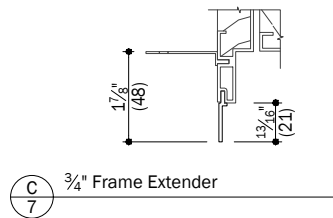
Commercial Door Sidelights & Transoms



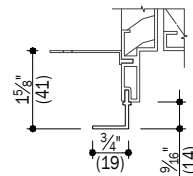
A
7 Frame Expanders
Sizes: 3/4", 1 5/8", 2 1/4", 3", 4", 7"



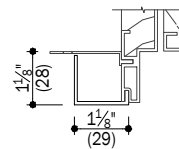
B
7 Expandable Exterior Casings



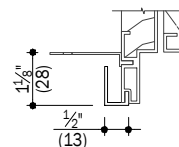
C
7 3/4" Frame Extender



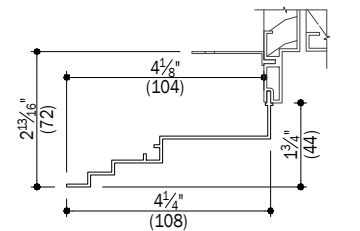
D
7 3/4" Frame Enclosure



E
7 90° Angle Closure



F
7 Expander Return



G
7 Historical Panning

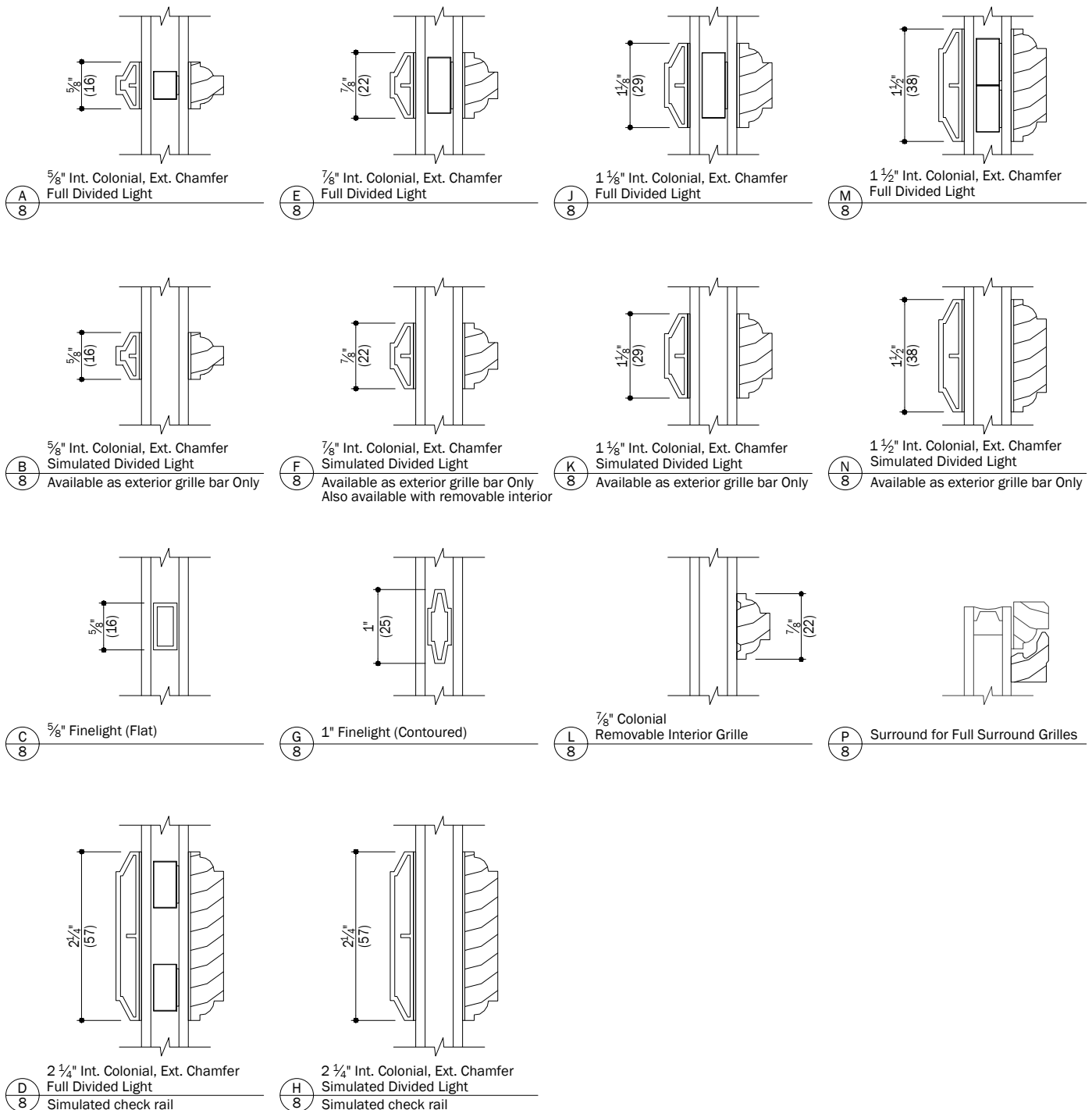
Notes:

Details have been optimized for use in architectural software and do not match manufacturing specifications.
Dimensions in parentheses are in millimeters.

Date: 02/06/18
Scale: 3" (76) = 1' (305)

E-Series

Commercial Door Sidelights & Transoms



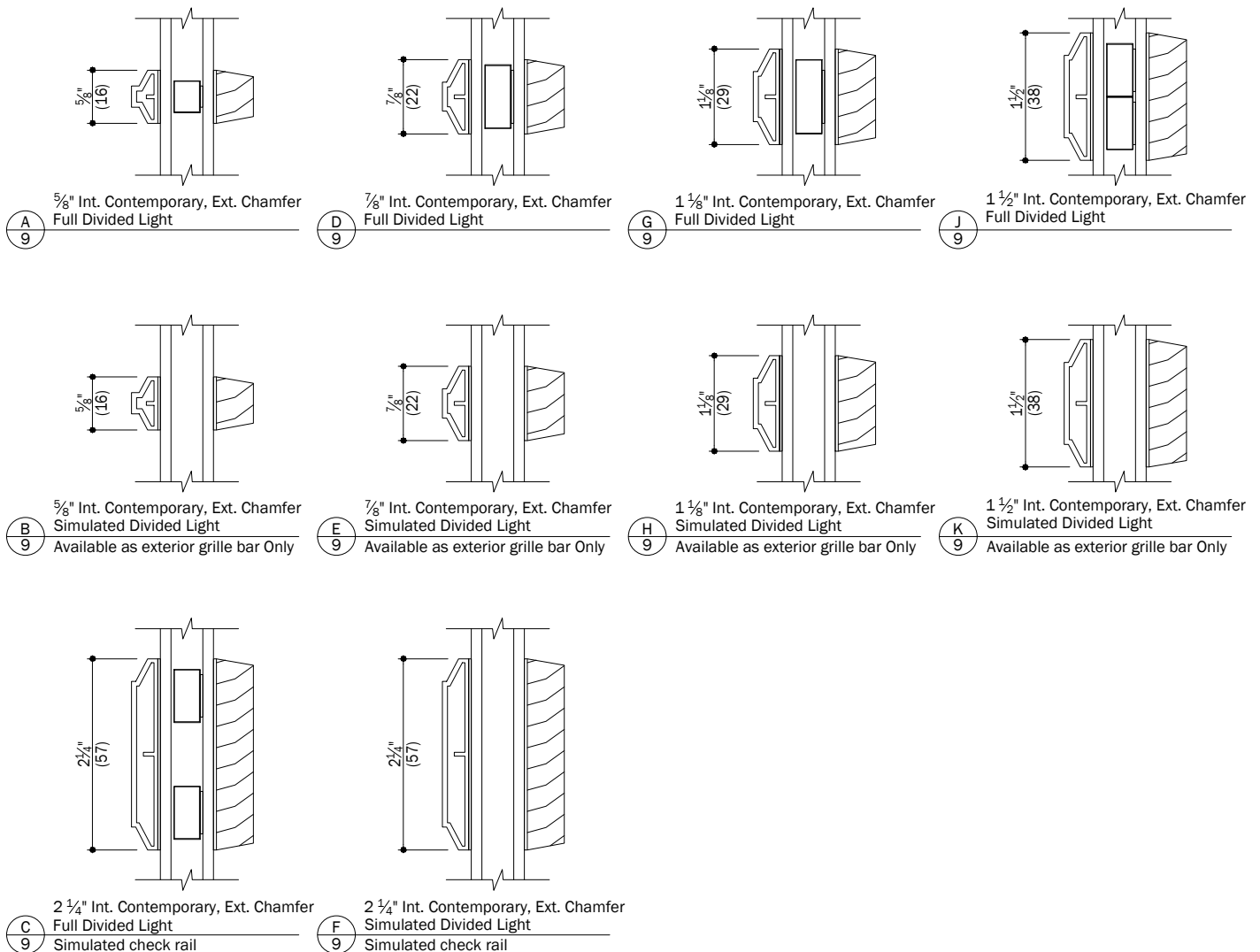
Notes:

Details have been optimized for use in architectural software and do not match manufacturing specifications.
Dimensions in parentheses are in millimeters.

Date: 02/06/18
Scale: 6" (152) = 1' (305)

E-Series

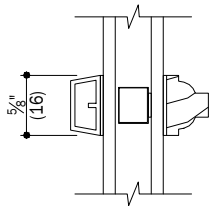
Commercial Door Sidelights & Transoms



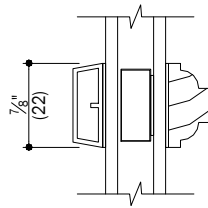
Notes:

Details have been optimized for use in architectural software and do not match manufacturing specifications.
Dimensions in parentheses are in millimeters.

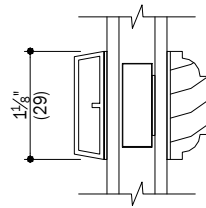
Date: 02/06/18
Scale: 6" (152) = 1' (305)



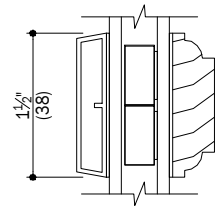
A
10
5/8" Int. Colonial, Ext. Contemporary
Full Divided Light



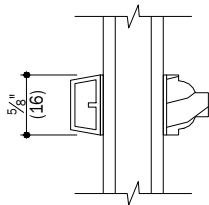
D
10
7/8" Int. Colonial, Ext. Contemporary
Full Divided Light



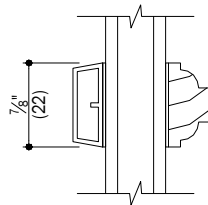
G
10
1 1/8" Int. Colonial, Ext. Contemporary
Full Divided Light



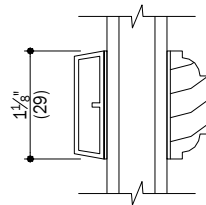
J
10
1 1/2" Int. Colonial, Ext. Contemporary
Full Divided Light



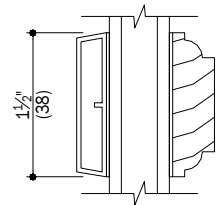
B
10
5/8" Int. Colonial, Ext. Contemporary
Simulated Divided Light
Available as exterior grille bar Only



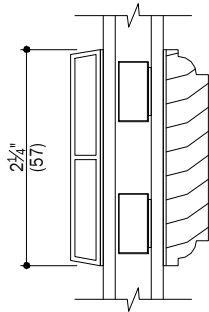
E
10
7/8" Int. Colonial, Ext. Contemporary
Simulated Divided Light
Available as exterior grille bar Only
Also available with removable interior



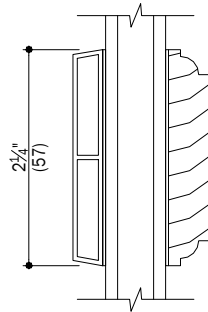
H
10
1 1/8" Int. Colonial, Ext. Contemporary
Simulated Divided Light
Available as exterior grille bar Only



K
10
1 1/2" Int. Colonial, Ext. Contemporary
Simulated Divided Light
Available as exterior grille bar Only



C
10
2 1/4" Int. Colonial, Ext. Contemporary
Full Divided Light
Simulated check rail



F
10
2 1/4" Int. Colonial, Ext. Contemporary
Simulated Divided Light
Simulated check rail

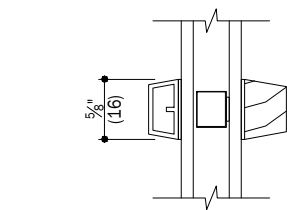
Notes:

Details have been optimized for use in architectural software and do not match manufacturing specifications.
Dimensions in parentheses are in millimeters.

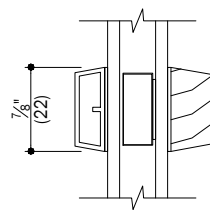
Date: 02/06/18
Scale: 6" (152) = 1' (305)

E-Series

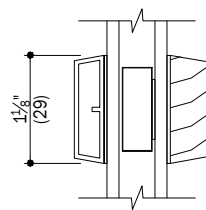
Commercial Door Sidelights & Transoms



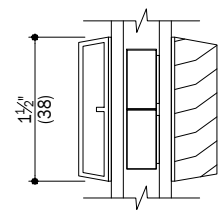
A
11
5/8" Int. & Ext. Contemporary
Full Divided Light



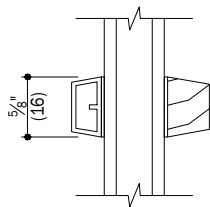
D
11
7/8" Int. & Ext. Contemporary
Full Divided Light



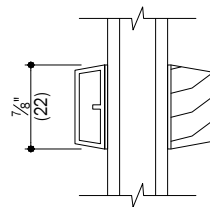
G
11
1 1/8" Int. & Ext. Contemporary
Full Divided Light



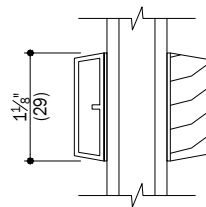
J
11
1 1/2" Int. & Ext. Contemporary
Full Divided Light



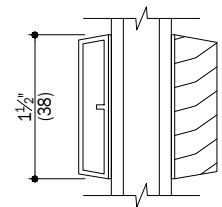
B
11
5/8" Int. & Ext. Contemporary
Simulated Divided Light
Available as exterior grille bar Only



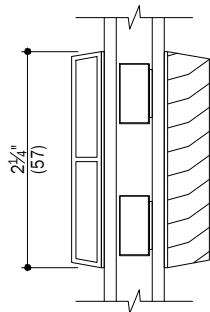
E
11
7/8" Int. & Ext. Contemporary
Simulated Divided Light
Available as exterior grille bar Only



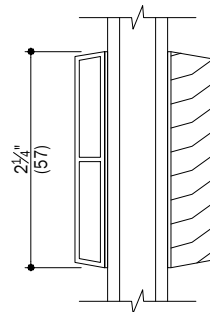
H
11
1 1/8" Int. & Ext. Contemporary
Simulated Divided Light
Available as exterior grille bar Only



K
11
1 1/2" Int. & Ext. Contemporary
Simulated Divided Light
Available as exterior grille bar Only



C
11
2 1/4" Int. & Ext. Contemporary
Full Divided Light
Simulated check rail



F
11
2 1/4" Int. & Ext. Contemporary
Simulated Divided Light
Simulated check rail

Notes:

Details have been optimized for use in architectural software and do not match manufacturing specifications.
Dimensions in parentheses are in millimeters.

Date: 02/06/18
Scale: 6" (152) = 1' (305)