

FIRE SAFETY

- The majority of fatal fires occur at night while people are asleep. Install smoke detectors in each sleeping room and on each level and test monthly.
- Develop a family escape plan and make sure family members know how to escape from the home in an emergency. Practice it so each member of the family understands it and is able to escape without assistance. Remember, you may not be able to reach children during a fire emergency. Teach children that they must escape from a fire in the home and never to hide from the fire or from emergency personnel.
- In your plan, include two ways to escape from every room in case one way is blocked by fire or smoke. In most cases, a window or a door is an alternative means of escape or rescue.

MAINTENANCE AND SECURITY

- Do not stand on sofas or beds or place ladders and scaffolding against windows, patio doors or storm doors when making repairs. Make sure ladders are placed on level surfaces to avoid falling against the glass.
- Many injuries occur when broken glass is mishandled during repairs. If making the repair yourself, follow the manufacturer's instructions for unpacking and safe installation of the replacement piece or unit. Wear gloves when handling broken glass.
- Repair broken sash, sash locks, balances and operating parts as soon as possible. Without these parts in proper working order, injuries can occur during operation, and escape, in the event of an emergency, could be difficult or impossible.
- Don't paint, nail or weatherstrip windows shut. You must be able to open them in an emergency.
- As a security precaution, keep windows and doors closed and locked to discourage intruders. An open window or door can be an invitation to theft.

FOR MORE INFORMATION

Consult your local building code, fire and police departments regarding general home safety, fire and security tips.

For more home safety tips and information, visit www.nsc.org and click on the "safety at home" tab.

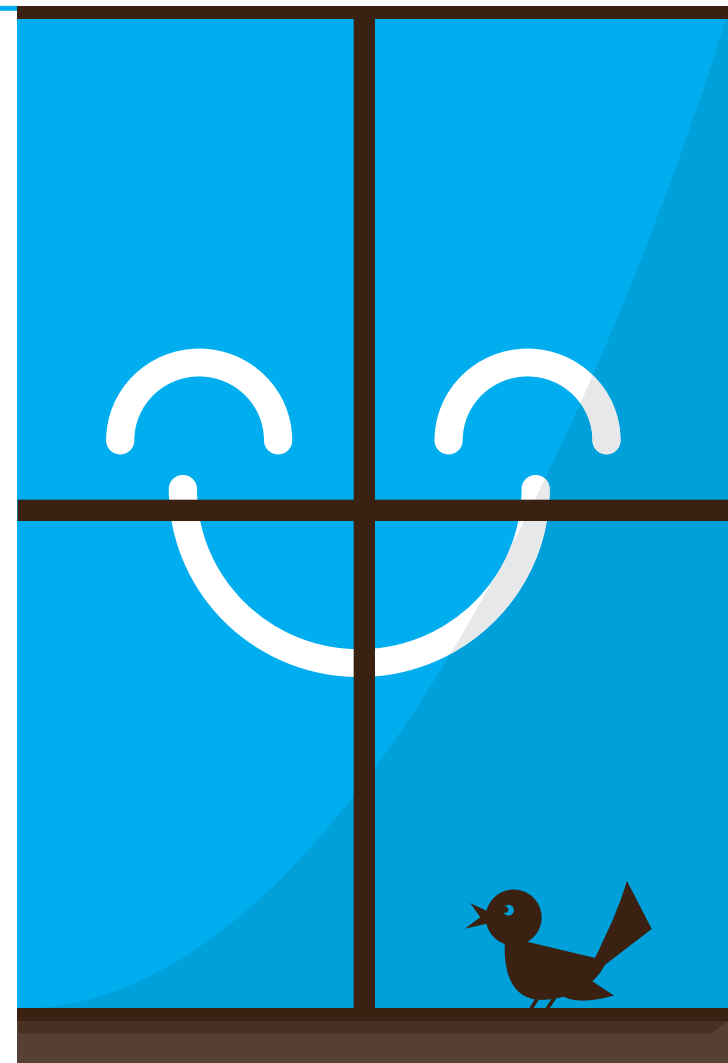
If you would like additional copies of the brochure, more resource information, details about how to obtain warning labels for the insect screens in your home or information about opening control devices for your Andersen® products, please call 1-800-313-8889 or email LOFK@andersencorp.com.



"LookOut For Kids" and the AW logo are registered trademarks of Andersen Corporation.

©2012 Andersen Corporation.
All rights reserved.

Window and Home Safety Tips



Look
OUT!
for kids®

Children see the world's wonder before they may see its dangers. By following a few basic safety tips, you can help prevent injuries related to windows and doors.

Windows and doors do more than provide views, sunlight and breezes — they can also save lives.

They serve as important escape or rescue points from the home in case of an emergency, such as a fire. It is important to look at how we use these products in our homes.

Window and door safety education is important for both children and adults. As parents, family members and caregivers, we have the greatest stake in our children's safety. At Andersen, we believe that companies that make products for the home should also help increase safety awareness in the home.



DOS



✓	Close and lock windows.
✓	Position beds and other furniture away from windows.
✓	Keep window and door treatments (blinds, cords, drapes, etc.) out of children's reach.
✓	Consider installing window opening control devices or window guards.*
✓	Keep patio doors, storm doors and entrance doors locked.
✓	Consider window placement when landscaping your home. Plant shrubs under windows.
✓	Develop a family escape plan.
✓	Check your smoke detectors to make sure they are in working condition.
✓	Consider adding a carbon monoxide detector.

DON'TS

- ⊘ Leave young children unsupervised.
- ⊘ Depend on insect screens to keep children from falling out of windows.
- ⊘ Apply energy-efficient films and coverings to windows designated in your family emergency plan as escape or rescue windows.
- ⊘ Paint, nail or weatherstrip windows shut.
- ⊘ Forget about window and door safety when making repairs to the interior or exterior of your home.



FALL PREVENTION

An open window may pose a hazard to an unsupervised child.

- If you need ventilation, open windows that children can't reach. Children can quickly climb to window ledges or sills and fall.
- Do not rely on insect screens to prevent falls. They are designed to provide ventilation and to keep insects out.
- If young children live in your home, consider installing window opening control devices or window guards that comply with local building codes.* When properly installed, these devices will limit the window sash to less than a four-inch opening. These devices have easy-release mechanisms so they can be disengaged to allow the window to fully open if needed for an emergency escape or rescue.
- Plant shrubs and soft edging like wood chips or grass beneath windows to provide a cushion in the event of a fall. The surface can greatly affect the degree of the injury sustained from a fall.

GENERAL WINDOW AND DOOR SAFETY

- Specify safety glass, such as tempered glass, as an extra precaution for windows and doors in potentially hazardous locations. Upon impact, safety glass breaks into small pieces rather than large, sharp pieces.
- Keep children's play away from windows and all doors, including patio doors, storm doors and entrance doors. Falling through the glass can cause serious injury.
- If patio doors have access to a swimming pool, install a four-sided fence around your pool. Consider equipping your patio door with an alarm that sounds immediately after the door is opened. Consult the local building code requirements in your area. In many states, alarms of this type are required.

*Window opening control devices or window guards must comply with ASTM F2090. Consult your local building code officials.